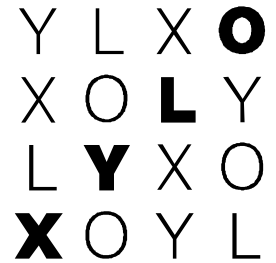


GRAPHICS GUIDE



Normally we assume that graphic data such as company logos and designs will be delivered to us in perfect producible form with no need of further manipulation / processing by us. Otherwise we have to charge the work time with 85,- €/hour plus VAT. This applies to all graphical services made by us.

To insure smooth and faultless production, following hints shall be helpful for transferring graphical data:

Graphical data for foil cutting applications

PC-data is preferred, Mac data possible within certain limitations. VECTOR-type data solely, originating from following programs:

Adobe Illustrator *.ai, *.eps or PDF in Version CS3 or lower (this is also necessary for Mac or higher CS Versions)

CorelDraw Version 8 (higher versions must be re-saved to version 8, or data must be exported in Adobe Illustrator 8 format or lower, all fonts converted to curves, spot-colours to CMYK)

InDesign eps or PDF CS3 or lower, fonts converted to paths / curves.

QuarkXpress, or Pixel-data pictures, (jpg, tif, bmp, gif etc.) are not suitable for foil cutting.

CAD-data: DXF format, DWG format AutoCad version 2000 or lower. Please note: CAD-data often requires intensive postprocessing, which will be charged to the orderer / customer.

General remarks

Please list all used colours in spot-colours (eg. Pantone matching system, RAL, HKS) The foils will be visually selected by comparing the foils to the sample colour guides. Deviations from original colours will be held in acceptable limits. Please enclose a layout print, proof (or PDF via e-mail) with exact measurements and colour listings when sending data or storage media.

Fonts / Type must be converted in paths / curves, otherwise you have to send in the **complete font family**. This applies to PC and Mac fonts as well. Mac fonts have to be converted, please send them as Stuffit Archive with intact resource fork. Suitable are PostScript Fonts (make sure they are complete: pfb, pfm, afm, inf-files) or TrueType as well as OpenType. Please note: Microsoft Word, PowerPoint or other office application documents are not suitable nor producible. For digitizing and postprocessing, 85,- €/hour plus VAT will be charged.

Data for foil cutting must not contain Pixel-data / pictures (JPEG, BMP, PCX, TIFF, Photoshop-eps) nor shall they contain gradients or shadows.

Digital print

Designs using these features can only be produced in digital printing techniques. Adobe Illustrator or CorelDraw-Format and PDF are possible as mentioned above, Photoshop-tif and eps is feasible too. According to the final size of the artwork a TIFF- or eps picture of approx. 20 to 50 MB (large format advertising panels up to approx. 100 MB) is needed, as well as a layout-picture (tif or jpg, approx. 2 MB). Please deliver proof or colour printout too. We produce digital prints on Roland VersaCamm 540 (ecoSolvent) in house. Many substrate types possible, max material width is 1370 mm (printable 1320 mm).

Data transfer

Via E-Mail up to 20 MB, otherwise via weTransfer link for bigger data (wetransfer.com).

CD, DVD; USB-Stick or div. Memory cards possible.

ISDN-transfer is not possible. FTP server not available on our side.

Via E-Mail:

Data from PC-systems, open or compressed (Stuffit / WinZip / Rar), depending on data size (max 20 MB) as attachments.

Mac-data generally zipped or Stuffit-compressed. Your Mac e-mail client software must be adjusted, insuring that the data is neither compressed by the client nor that the binary format is altered. Settings must be PC-compatible (UUEncode).

For further questions please contact our graphics department phone 089/748953-21 or the reception (ext. -0).

(as of November 2015)